

Puppet Ring

Puppet Ring

design Romani Sacconi Architetti Associati 2019 - restyling 2023

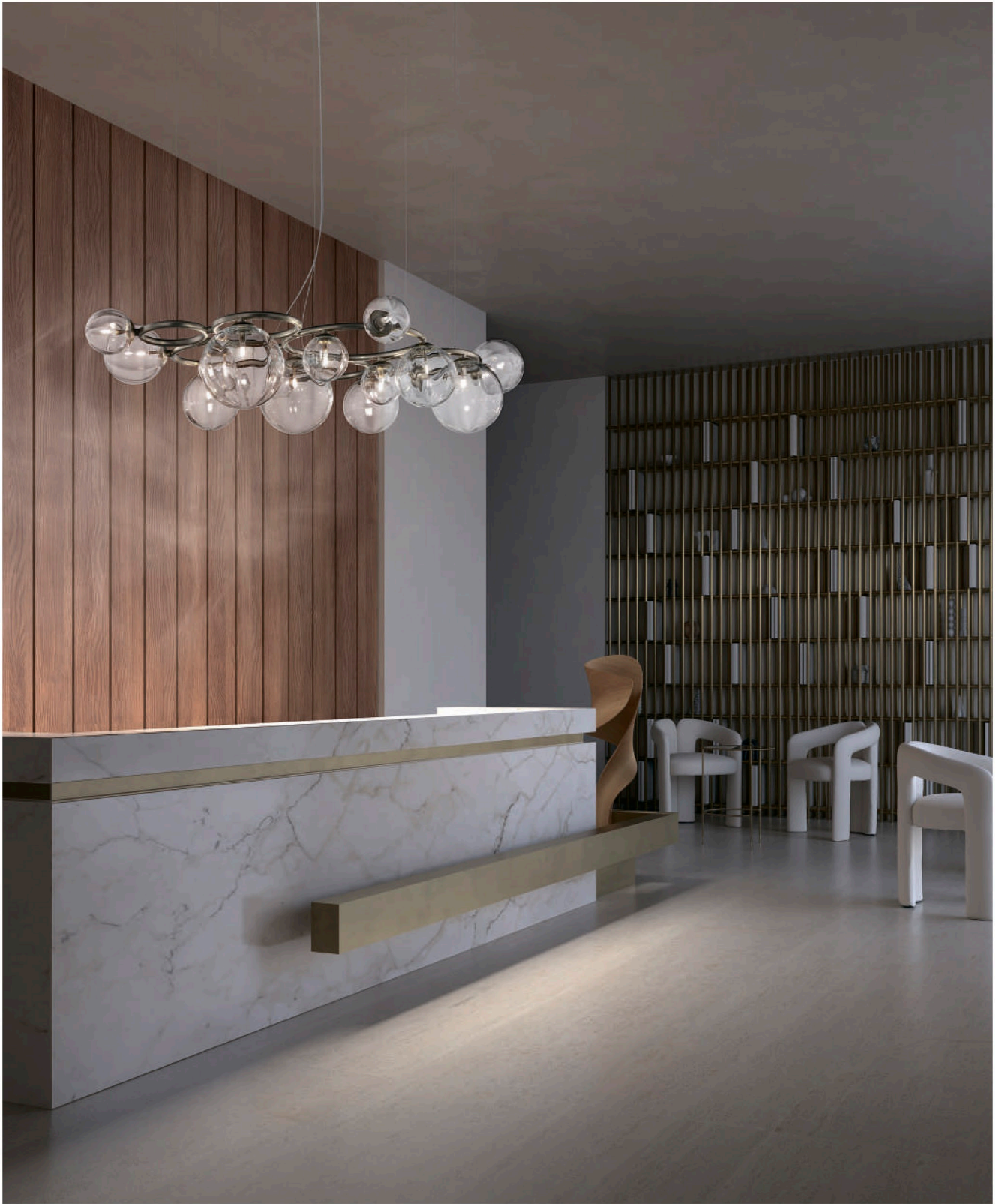
La collezione Puppet Ring nasce dall'idea di creare una montatura accostando anelli con diametro differente, su cui poggiano sfere in cristallo di tre dimensioni.

Anche le nuove tre sospensioni dalle dimensioni e forme diverse mantengono un'estetica leggera ed elegante coniugando in modo etereo vetro cristallo, fumè, ambra e bianco sfumato con finiture oro e nickel nero satinato.

The Puppet Ring collection is based on the idea of creating a frame by combining rings with different diameters, on which crystal balls in three sizes are mounted.

The new three suspension lamps of different sizes and shapes also maintain a light and elegant aesthetic by ethereally combining crystal glass, smoked, amber and shaded white with gold and satin black nickel finishes.





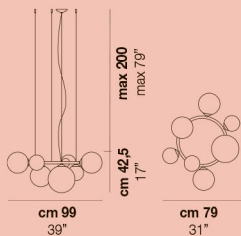




Puppet Ring

design Romani Sacconi Architetti Associati 2019 - restyling 2023

PUPPET RING 7A

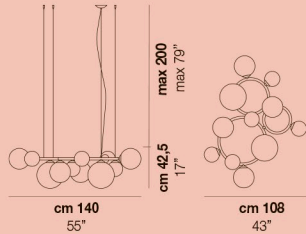


7x60W G9

USA & CANADA

7x60W G9

PUPPET RING 11

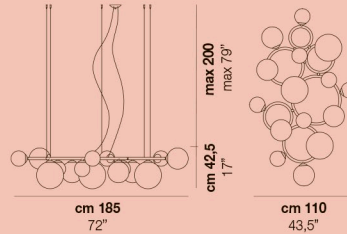


11x60W G9

USA & CANADA

11x60W G9

PUPPET RING 15

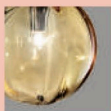


15x60W G9

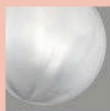
USA & CANADA

15x60W G9

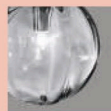
finitura vetro/glass finish



AM/TR



BC/SF

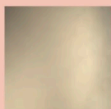


CR/TR

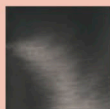


FU/TR

finitura struttura/frame finish



BKS



NNS